



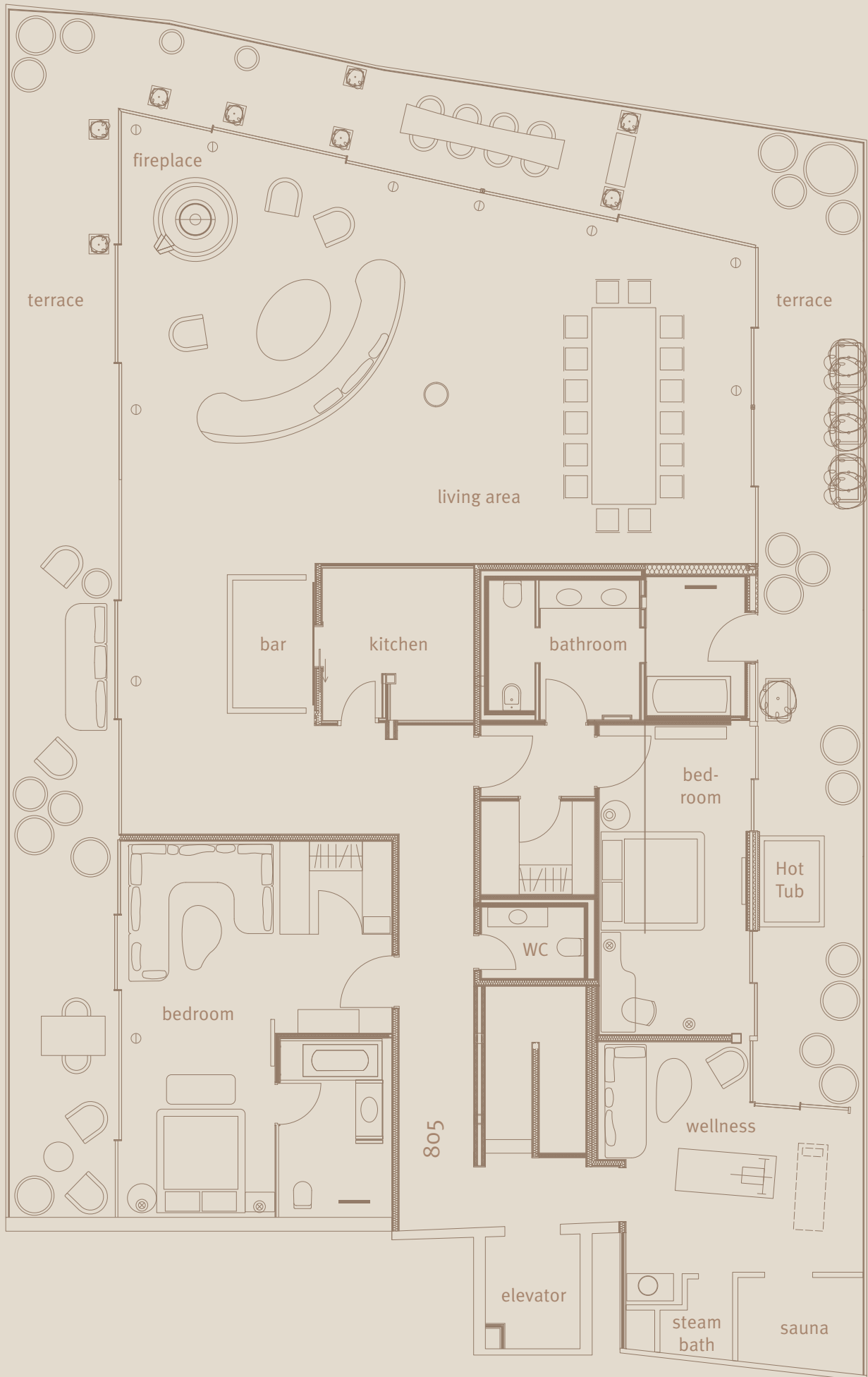
PENTHOUSE GARDEN SUITE

The **south and north wing**: discover our **Penthouse Garden Suite** designed by Axel Vervoordt. The 350-square metre suite encompasses the entire 8th floor and is surrounded by a spacious roof terrace with a spectacular view over Munich. The suite features a discreet and understated design in light natural and earthy tones. Thereby, particular attention was paid to creating an area of tranquillity and comfort for the guest. Each piece of furniture, made from reclaimed wood, is unique and was given an artistic overhaul. The lamps, designed by the Japanese ceramic artist Kosi Hidama, are one-of-a-kind and were made in Vervoordt's workshop in Gravenwezel near Antwerp. All exterior walls are panoramic windows, which fill the rooms with natural light and offer breathtaking views over the city. The **Penthouse Garden Suite** can be extended to the **Penthouse Garden Ensemble**, including up to 7 rooms on the 7th floor (5 deluxe double rooms as well as 2 deluxe junior suites adding up to 225 sqm) resulting in a total of 575 sqm. The design of the rooms echoes the philosophical principles of Wabi: beauty is found in imperfection and authenticity, Artempo – where time becomes art, and natural materials that are rich in spirit.

| Penthouse Garden Suite | | | | |
|------------------------|-------------|--------------|--|---|
| Suite | Size in sqm | Size in sqft | Facilities | Extension |
| 805 | 350 | 3768 | <p>2 luxury bedrooms with walk-in wardrobe, adjoining bathrooms with double washbasin and guest bathroom. Finest linen were used for the bed linen, sofas, armchairs, chairs and cushions.</p> <p>Fully equipped kitchen with adjoining bar, a spacious dining area for up to 16 persons. Living area with fireplace and a cosy sofa.</p> <p>Private spa area with sauna, steam bath, massage and lounge area as well as a cardio cross-trainer.</p> <p>Terrace with cosy sitting areas, climbing plants, privacy shields and hot tub.</p> <p>65-inch TV and sound system from Bang & Olufsen.</p> | <p>Daily afternoon tea on request, either at your suite or at the Atrium, Champagne, mini bar, newspaper, butler, chauffeur, private check in, private spa. Can be combined with the entire "Seventh Floor"</p> |

| Seventh Floor | | | | |
|---|-------------|--------------|---|--|
| Suite | Size in sqm | Size in sqft | Facilities | |
| 738 + 739 + 740 + 741 + 742 + 744 + 745 | 225 | 2422 | <p>5 deluxe double rooms as well as 2 deluxe junior suites. Sustainable materials such as natural stone and regenerated wood. Luxurious bedrooms with adjoining bathrooms with double washbasin, rain showers and a separate toilette. Discreet and understated design.</p> | |

| Penthouse Garden Ensemble | | | | |
|---|-------------|--------------|---|--|
| Suite | Size in sqm | Size in sqft | Facilities | |
| 805 + 738 + 739 + 740 + 741 + 742 + 744 + 745 | 575 | 6190 | <p>9 rooms, 2 luxury bedrooms at the Penthouse Garden Suite as well as 5 deluxe double rooms and 2 deluxe junior suites on the Seventh Floor.</p> | |



8th floor Penthouse Garden Suite



7th floor Seventh Floor

Penthouse Garden Suite and Seventh Floor
7th and 8th floor

Suite 805



Seventh Floor



Hotel Bayerischer Hof

Promenadeplatz 2-6
80333 Munich, Germany

Phone +49 89.21 20 - 0
Fax +49 89.21 20 - 906

www.bayerischerhof.de
info@bayerischerhof.de



LEGEND
Preferred
HOTELS & RESORTS

