



PILATI STYLE SUITES

Enjoy understated luxury in the style of the famous Atelier Pilati. The modern, elegant suites in subtle shades of tones such as pearl gray, taupe and champagne radiate subtle design and a comfortable living atmosphere. The rooms offer spaciousness, emphasized by precious fabrics, piped upholstery and decorative elements. The 236 and 436 suites facing the inner courtyard are accessible via separate entrances in the living and sleeping areas.

Hotel Bayerischer Hof

Promenadeplatz 2-6
80333 München

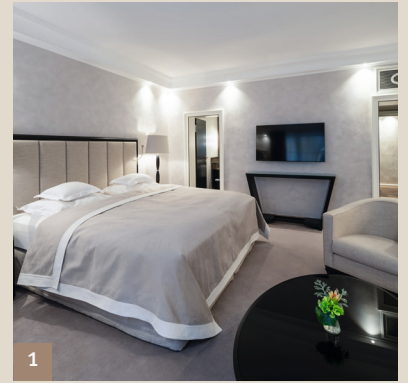
Fon +49 89.21 20 - 0
Fax +49 89.21 20 - 906

www.bayerischerhof.de
info@bayerischerhof.de

 LEADING
HOTELS®

LEGEND
Preferred
HOTELS & RESORTS





PILATI STYLE SUITES

Our Pilati Suites can be used as a one-bedroom suite or can be extended with the adjoining double room to create a spacious two-bedroom suite.

Suite 415 and room 414 have a shared anteroom and are accessible via separate entrances. In addition to a dining and seating area, the suite's living area is equipped with a kitchenette with induction hob and sink and offers a beautiful view of the Promenadeplatz, beautiful view of the Promenadeplatz and the Frauenkirche. The suite also has a walk-in closet as well as one or two bathrooms and a separate WC. The bedrooms each face the quiet inner courtyard.



BAYERISCHER HOF

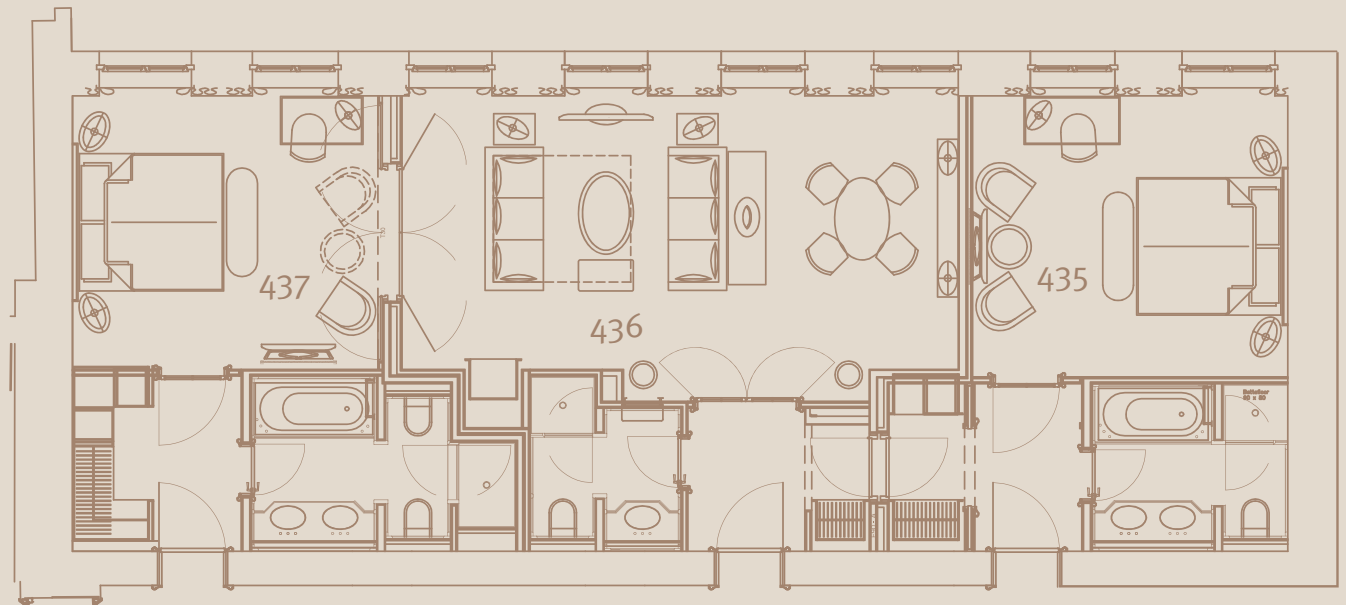


4. th Floor				
	Suite / Room	Area in sqm	Equipment	Expansion
1	414	37	Desk, seating area, parquet floor, flatscreen TV, Nespresso coffee machine, marble bathroom with double washbasin, bathtub and separate rain shower	Can be combined into a two-bedroom suite with 415
2	415	109	Living room with seating area and separate dining area, parquet floor, Kitchenette, kitchen, Nespresso coffee machine, desk, flatscreen TV, marble bathroom with double washbasin, bathtub, separate rain shower and bidet	Can be combined into a two-bedroom suite with 414
3	Two-Bedroom-Suite, 4. th Floor	151		414 + 415

Suite floor plan
Pilati Style 235 – 237



Suite floor plan
Pilati Style 435 – 437



2. nd and 4. th Floor			
Suite / Room	Area in sqm	Equipment	Expansion
235	30	Desk, seating area, parquet floor, flatscreen TV, Nespresso coffee machine Marble bathroom with double washbasin, bathtub, separate rain shower and bidet	Can be combined into a two-bedroom suite with 236 and 237
4 236	39	Living room with seating area and separate dining area, parquet floor, kitchenette, flatscreen TV, Nespresso coffee machine, marble bathroom with rain shower	Living room, can be combined into a one-bedroom suite with 237 or two-bedroom suite with 235 and 237
5 237	33	Desk, seating area, parquet floor, flatscreen TV, marble bathroom with double washbasin, bathtub, separate rain shower and bidet	Can be combined into a two-bedroom suite with 235 and 236
Two-Bedroom-Suite, 2. nd Floor	102		235 + 236 + 237
435	33	Desk, seating area, flatscreen TV, Nespresso coffee machine, marble bathroom with double washbasin, bathtub and separate rain shower	Can be combined into a two-bedroom suite with 436 and 437
436	42	Living room with seating area and separate dining area, flatscreen TV, kitchenette, Nespresso coffee machine, marble bathroom with rain shower	Living room, can be combined into a one-bedroom suite with 437 or two-bedroom suite with 435 and 437
6 437	33	Desk, seating area, flatscreen TV, marble bathroom with double washbasin double washbasin, bathtub, separate rain shower and bidet	Can be combined into a two-bedroom suite with 435 and 436
Two-Bedroom-Suite, 4. th Floor	108		435 + 436 + 437